



Citrix MetaFrame for Windows 2000 Servers.

*Application server software for enterprises
to compete in the digital economy.*



Citrix is the world leader in application server software and services that provide "Digital Independence™"—the ability to deliver any application to any device over any connection—wireless to Web.





Enterprise-class *management.* *End-to-end* command and control.



Rapid delivery of business-critical applications, across the extended enterprise—on the Web and other networks—

comprehensive solution on the market for system monitoring, capacity planning and application audit trails.

In the global marketplace where you must deliver applications to users faster, with fewer budget resources and IT personnel, you need command and control from a single point. That's why we've perfected

Citrix Installation Management

Services. You simply run an application's installation routine on a single server, then deploy the application to each server in the farm. Automatically. It's the fast-cycle tool for providing the right applications to the right users anywhere in the world.

And with **Citrix Program Neighborhood™**, you can completely eliminate end-user involvement in application installations. You simply “push” access to new or updated server-based applications directly to users.

Of course your enterprise computing environment would not be enterprise-class without the ability to protect network data. Citrix MetaFrame for Windows 2000 Servers uses **Citrix SecureICA® Services** with end-to-end RSA RC5 encryption for the ICA data stream.

It's an enterprise-class solution that allows for rapid application deployment. Better utilization of scarce IT resources. And a more predictable computing experience in terms of cost and performance.

requires a robust, centralized application delivery and management capability. It must be scalable, reliable, manageable and secure. And it must offer predictability in terms of performance, user experience and cost.

Citrix MetaFrame for Windows 2000 Servers empowers you with the end-to-end command and control that enterprise-class computing demands.

That's why Citrix offers **Citrix Load Balancing Services.** This robust systems management tool enables you to scale easily by grouping multiple Citrix MetaFrame servers into reliable, unified server farms.

Optimum performance and user up-time for a 24x7 enterprise is also a must today. And for this type of performance you need real-time monitoring and management of applications, users and system resources. That's why we developed **Citrix Resource Management Services**—the most



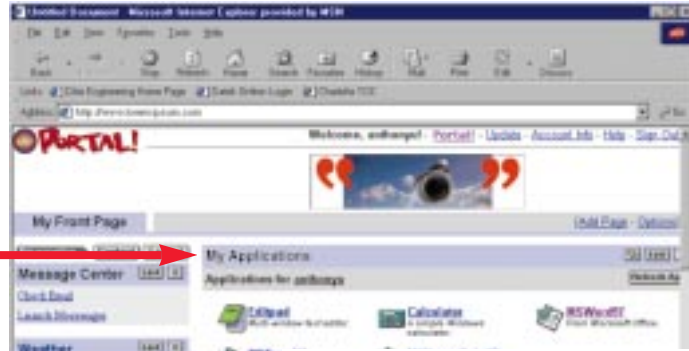
With **Citrix Installation Management Services**, you simply package and publish applications to all Citrix MetaFrame servers. The application will be immediately downloaded, installed and configured at the click of a mouse.



With **Citrix Resource Management Services** a Citrix administrator can create graphs depicting the historical performance of any given Citrix MetaFrame server.



With the Citrix NFuse wizard, developers can quickly and easily integrate and publish applications into personalized application portals.



Web application publishing.

Run any app *on the Web. Now!*

The Internet has changed the way the world competes. Simply put, applications must be available via the Internet to users everywhere, inside and outside the organization, using a standard Web browser.

With Citrix **application portal technology**, NFuse™, you have the power to integrate and publish interactive applications into any standard Web browser. And with Citrix MetaFrame for the UNIX® operating environment and Citrix application launching and embedding (ALE) you can seamlessly integrate UNIX and Java™ applications in a single portal as well.

To publish applications you simply create application portals with the Citrix NFuse Web portal wizard or simplified scripts. You define the applications set

specific to each user or group and the application portal is dynamically created. When the portal is accessed from a Web browser, the user clicks on the desired application, it opens in the browser and works as if it were a local application.

With NFuse from Citrix, you can enhance your users' computing experience with the power to personalize which applications users receive. You can even personalize the browser and content around the applications, by user, if you choose. Plus, you retain the ability to manage applications using all the powerful capabilities of Citrix MetaFrame for Windows 2000 Servers. It's the ultimate way to run existing apps on the Web. Now.



PCs, Mac computers, UNIX and Linux

Flexible application *access on demand.*

Any user. Anywhere.

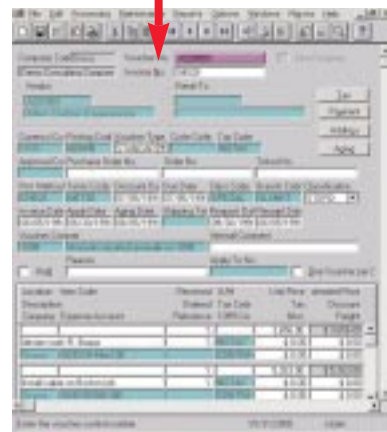
In the digital economy, applications must be delivered to users around the world on a variety of devices and over many types of connections.

Citrix MetaFrame uses **Citrix ICA**, an industry standard that enables client devices of all types to shift application processing to the server with very low bandwidth requirements. This extends the reach of Windows 2000 Servers. PCs, Mac® computers, UNIX and Linux workstations, Web browser-enabled devices, laptops, set top boxes, mobile handheld devices and other network appliances can be used transparently

to access any application running on Windows 2000 Servers. All applications can be accessed, seamlessly, over the Internet, LAN, WAN, dial-up or wireless connection. And all applications look, feel and perform as if they are running on a local desktop.

The flexibility in choice of device—new, next generation or even legacy—means fewer hardware roadblocks and far less technology churn. And with more efficient use of network bandwidth, you can actually reduce telecommunications costs. And avoid the expense of an untimely network upgrade.

ERP Application



With over 15 million ICA users and over 250 million ICA-enabled clients world-wide, Citrix Independent

Computing Architecture (ICA) is a de facto industry standard for delivering virtually any application to any device.



The ability to deliver any application to any device over any connection—wireless to Web. It's all about a more powerful way to compete in the digital economy.

With Citrix ICA and Citrix MetaFrame for Windows 2000 Servers, even a wireless Windows CE device can access the most advanced business-critical applications from anywhere.



workstations, laptops, Web-browser enabled devices, set top boxes, mobile handheld devices and other network appliances.



Introducing Citrix MetaFrame *for Windows 2000 Servers.*

Full-throttle performance to meet
today's demanding *IT challenges.*

The information revolution, the advent of powerful servers, the explosion of new applications and new devices, and the incredible growth of the Internet have us on the doorstep of the digital economy.

Competing in this new world is fast, furious and unforgiving with non-stop, around-the-clock IT challenges all over the world. And your customers are asking you for answers.

What do your users need most? Information access to business-critical applications. And what do you need most? The ability to deliver those applications to any device, anywhere, fast, cost-effectively and predictably.



Citrix MetaFrame for Windows 2000 Servers employs the most advanced architecture in the application server software industry.

Now you can reach more users,
with more applications, in more locations
with both *speed*
and *predictability.*

With Citrix® MetaFrame™ for Microsoft® Windows® 2000 Servers you can provide an enterprise-class computing environment. Integrate and publish interactive applications into any standard Web browser. And extend the reach of Windows 2000 Servers beyond the desktop to all types of devices, even those that are non-Windows-based.

Citrix MetaFrame for Windows 2000 Servers features.

Citrix MetaFrame server architecture.

Citrix MetaFrame for Windows 2000 Servers employs the most advanced architecture in the application server software industry.

- Functions with Microsoft Windows 2000 Servers, Advanced Server and Data Center
- Groups multiple servers into a logically distributed server farm
- Includes Citrix Independent Computing Architecture
- Runs any 16- or 32-bit Windows-based application

Enterprise-class management. End-to-end command and control.

Systems—Robust systems-management tools for enterprise-wide scalability, reliability and security.

- Citrix Load Balancing Services
- Console, dial-up or LAN administration
- ICA browser manager
- Data encryption
- Master application execution list
- Citrix SecureICA Services
- Server/drive access restrictions by drive, directory, file, user, day and time
- Integrates with NetWare® Bindery, NDS® and Windows 2000 domain services and AD
- Supports third-party authentication/encryption solutions

Applications—Rapidly deploy and manage applications from a single point for optimum performance and uptime.

- Citrix Installation Management Services
- ALE
- ALE Wizard
- Application Publishing
- Citrix Resource Management Services
- EMS
- Automatic ICA Client Update

Users—You maintain control of the desktop. Users get connect-and-compute access.

- Program Neighborhood
- Enhanced anonymous user support
- Session Shadowing
- License Pool Recovery
- Client Device Licensing establishes multiple server sessions using only one license
- ICA Client Enhancements
- Client print manager
- Client drive mapping
- ReadyConnect™ Client
- Cut and paste between local and remote application sessions
- Print to local or remote printers
- Local/remote clipboard
- Port mapping
- Port configuration and administration
- Printer mapping
- Seamless windows
- SpeedScreen™ 2
- VideoFrame™
- Audio support

- One-click dial-in support
- Business Recovery Client
- Background file transfer

Web application publishing. Run any app on the Web. Now!

Integration—Integrate existing and new applications into any standard Web browser. Instantly.

- Citrix application portal technology, NFuse, offers the ability to integrate any application into standard Web browsers
- To integrate applications you simply create application portals with the Citrix NFuse Web portal wizard or simplified scripts
- Integrate users via browser access to virtually any application, from virtually any device, using virtually any operating system

Personalization—Personalize the applications a user receives. Personalize the browser and content around the applications, by user, if you choose.

- Personalize user experience by adding any HTML, scripting, graphics or other content to custom Web pages or the templates provided
- Embed applications within Web pages or launch application windows

Control—Use all the robustness of Citrix MetaFrame for application management.

- Complete control enterprise-wide
- Deploy apps from a central location

Flexible application access on demand. Any user. Anywhere.

Applications—Access to the full range of Windows-based business and productivity applications

Devices—Access from any client device or appliance, Windows- and non-Windows-based.

- Microsoft Windows 2000 Servers, Advanced Server and Data Center, Windows NT® 95, 98, 3.x, WinCE
- MS-DOS, OS/2
- Java
- Netscape Navigator® (Plug-in)
- Microsoft Internet Explorer (ActiveX® control)
- Windows-based terminals
- Macintosh® computers
- UNIX workstations/Linux
- X-terminals (third-party product)

Connections—Access with any connection. LAN, WAN, Internet, Wireless.

- ICA Network Services
- Windows 2000, NT domains, workgroups, Active Director and NDS
- Novell® NetWare 3.x and 4.x LANs
- IBM® LAN Server
- TCP/IP, IPX, SPX and NetBEUI protocols
- Hardware- and software-based remote-node servers
- Direct Asynch. (up to 230 Kbps)
- High-speed analog modems (more than 400 makes and models)
- ISDN, Frame Relay, X.25, T1, T3, E1
- 10/100 Ethernet, Token Ring, ATM, FDDI
- Wireless



S&P
500



Soft•letter
DESIGN & STRATEGIES IN SOFTWARE PUBLISHING

Worldwide Headquarters
Citrix Systems, Inc.
6400 NW 6th Way
Fort Lauderdale, FL 33309 USA
Tel: +1 (800) 393 1888
Tel: +1 (954) 267 3000
<http://www.citrix.com>

Americas' Headquarters
Citrix Systems, Inc.
6400 NW 6th Way
Fort Lauderdale, FL 33309 USA
Tel: +1 (800) 437 7503

European Headquarters
Citrix Systems International GmbH
Rheinweg 9
8200 Schaffhausen
Switzerland
Tel: +41 (52) 635 7700

Asia Pacific Headquarters
Citrix Systems Asia Pacific Pty Ltd.
Level 3, 1 Julius Avenue
Riverside Corporate Park
North Ryde NSW 2113
Sydney, Australia
Tel: +61 (0) 2 8870 0800



Now everything computes...