

ACCPAC®

ACCPAC Corporate Series

GL Consolidations

HIGHLIGHTS

- Powerful consolidation capabilities of any number of general ledgers
- Ability to customize the details to consolidate
- Multicurrency support
- Comprehensive audit trail

REPORTS

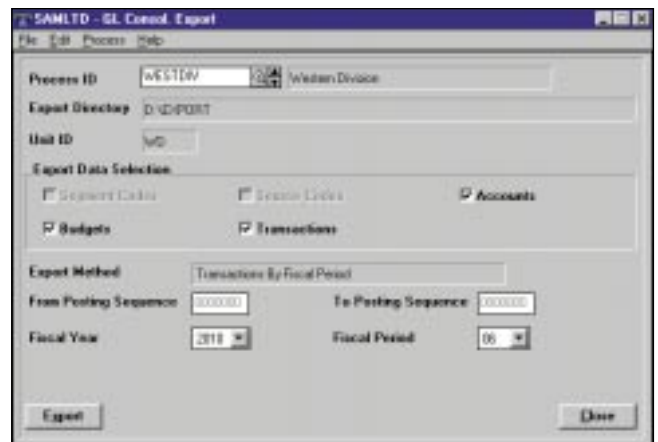
- Import Unit Maintenance
- Mapping Table
- Export Setup
- Export Audit
- Import Audit

ACCPAC Corporate Series GL Consolidations' built-in flexibility meets the needs of companies requiring a sophisticated tool to consolidate multiple general ledgers

ACCPAC Corporate Series™ GL Consolidations provides a feature set that allows your company to define the level of detail to consolidate and provide a comprehensive audit trail. GL Consolidations is designed so that information can be easily transferred to other locations allowing subsidiaries and holding companies to run without being on the same network. The system is available in two versions: a full version, designed for the head office and a remote sites version, designed for branch offices.

Powerful Consolidation Features

- Consolidate multiple general ledgers.
- Perform multilevel consolidations.
- Tailor your needs through control over the level of detail.
- Consolidate by transactions, net period changes or account balances.
- Include transactions by posting sequence or by fiscal period.
- Update quantities for those accounts that maintain quantities.
- Include budgets for a range of years in the consolidated company.
- Consolidate on an as-needed basis.
- Maintain a separate general ledger for consolidated ledgers or consolidate ledgers with the head office or central general ledger.
- Transfer transactions originating in a holding company back to subsidiaries to centrally maintain payroll or fixed assets.



Powerful Export feature makes exporting data quick and easy.

Windows® 2000 Ready



Comprehensive Multicurrency Support

- Consolidate multicurrency and single currency accounts and ledgers.
- Consolidate general ledgers with differing functional currencies.
- Automatically perform currency translation with the provision of gain or loss on translation.
- Translate amounts from functional currency or source currency in the originating ledger and specify the translation rate type.

Flexible Processing

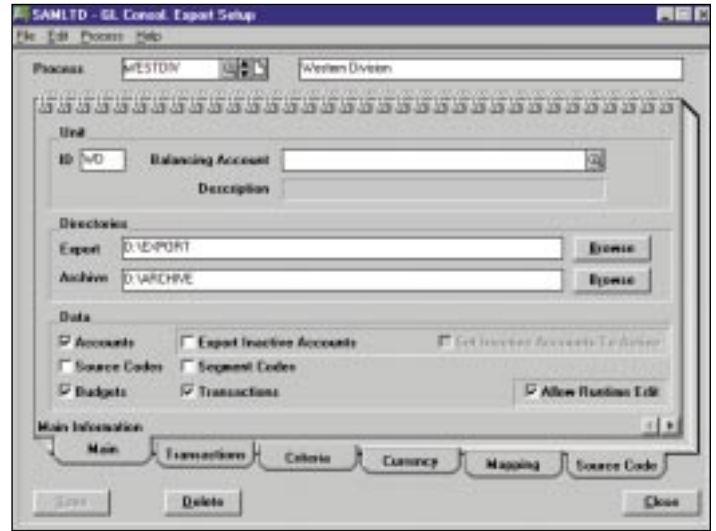
- Consolidate all accounts or a partial set of the accounts.
- Specify the range of accounts, segments and source codes.
- Use the automatic balancing account when consolidating a partial account set.
- Consolidate general ledgers with differing fiscal years and fiscal periods.
- Consolidate general ledgers with different account structures by using a mapping table.
- Merge multiple accounts in subsidiaries into single holding company accounts.
- Substitute the original source code with a specified source code.
- Exclude entries to specific source codes from the consolidation.
- Automatically archive all files used in the consolidation process to an archive directory.

Comprehensive Audit Trail

- Set the source ledger and source code of consolidation entries.
- Insert the original audit trail from transactions posted in the source general ledger.
- Specify a description for account balances or net change transactions.
- Print audit trail reports that detail the data selection criteria.

Complete, Customizable Reporting

- Use the reporting capabilities of the General Ledger to print a full audit trail of all transactions.
- Maintain a detailed audit trail of all consolidation activities.



Flexible Export Setup feature lets you specify the general ledger data you want to export.

ACCPAC®

For more information about this and other ACCPAC® products, please call:

800-808-7000

or visit:

www.accpac.com

For current system requirements, consult your authorized ACCPAC reseller or visit www.accpac.com.

©2000 ACCPAC International, Inc. All Rights Reserved. ACCPAC, the ACCPAC logo and ACCPAC Corporate Series are either registered trademarks or trademarks of ACCPAC International, Inc. or its affiliates in the United States and/or other countries. All other marks are trademarks or registered trademarks of their respective companies.

P/N 1100CORPGLC23K

